



## JOB FACT SHEET

Facility:  
**Sheraton Midtown Boiler Plant**

Location:  
**New York, New York**

Project Type:  
**Off Site Construction – Penthouse**

Duration:  
**Five Months**

### PROJECT OVERVIEW

Off Site Constructed Boiler Plant for Hotel in Mid-town Manhattan allowing the hotel to generate their own steam.

### PROJECT HIGHLIGHTS

1100 Sq. Ft. Boiler Plant

(4) 191 HP; 8,000 MBH Input hot water gas fired steam boilers

Piping systems steam

Condensate and make up water

Midtown Manhattan - located on the 5th floor

Two tier system - equipment on first level and piping and electrical top hat section

### TECHNICAL DETAILS

- Rigging and setting of (8) sections took (1) ten hour day
- Crane and road closure for only that time frame
- All weather insulated panels with two hour fire rating
- Architectural doors etc
- Carlisle roofing installed by Baker Roofing
- Shebler Chimney Systems boiler stacks
- Markel Unit Heaters
- Envirotrol Controls





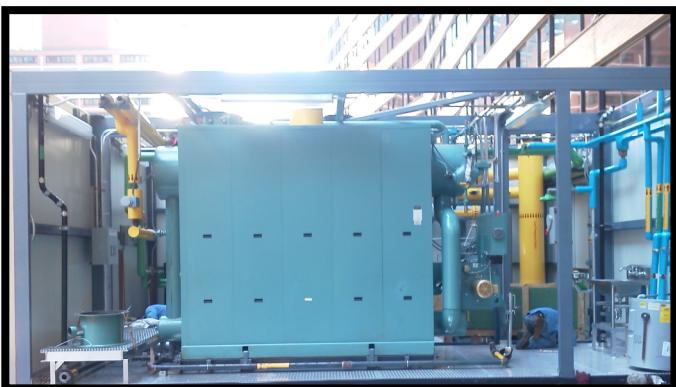
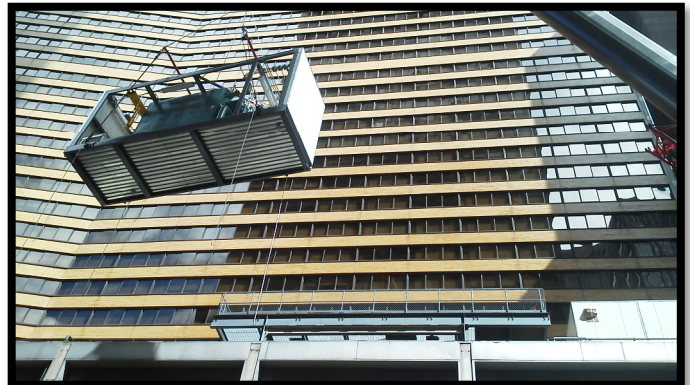
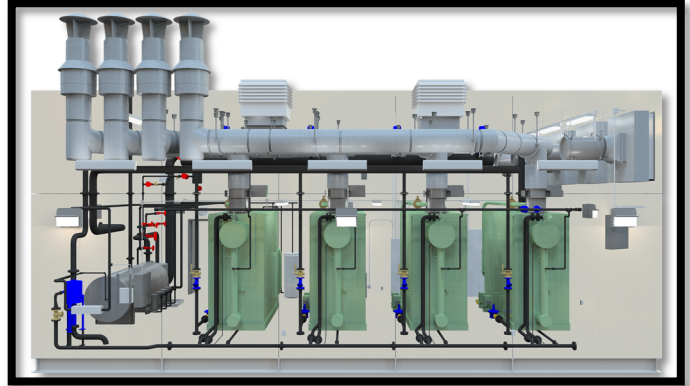
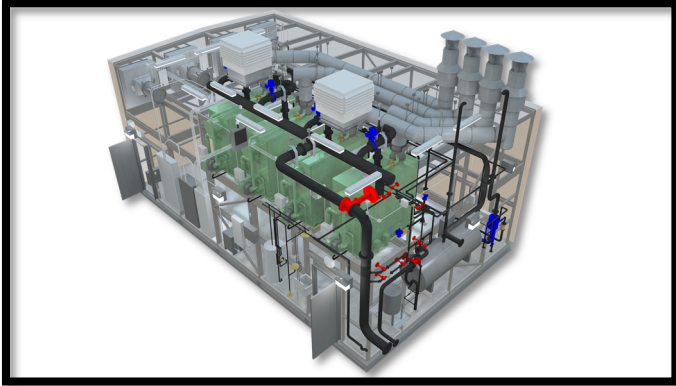


**ENVIRONMENTAL  
AIR  
SYSTEMS, LLC**

250 Swathmore Avenue  
High Point, NC 27263  
336-861-0047

## JOB FACT SHEET

### JOB PHOTOS



**For More Information: [www.easinc.net](http://www.easinc.net)**





## JOB FACT SHEET

Facility:  
**Sheraton Midtown Boiler Plant**

Project Type:  
**Off Site Construction – Penthouse**

Location:  
**New York, New York**

Duration:  
**Five Months**

### PROJECT OVERVIEW

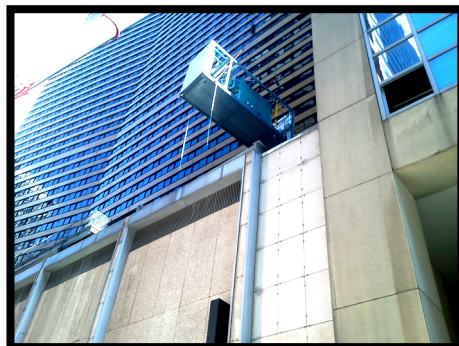
Off Site Constructed Boiler Plant for Hotel in Mid-town Manhattan allowing the hotel to generate their own steam.

### PROJECT HIGHLIGHTS

1100 Sq. Ft. Boiler Plant  
(4) 191 HP; 8,000 MBH Input hot water gas fired steam boilers  
Piping systems steam  
Condensate and make up water  
Midtown Manhattan - located on the 5th floor  
Two tier system - equipment on first level and piping and electrical top hat section

### TECHNICAL DETAILS

- Rigging and setting of (8) sections took (1) ten hour day
- Crane and road closure for only that time frame
- All weather insulated panels with two hour fire rating
- Architectural doors etc
- Carlisle roofing installed by Baker Roofing
- Shebler Chimney Systems boiler stacks
- Markel Unit Heaters
- Envirotrol Controls





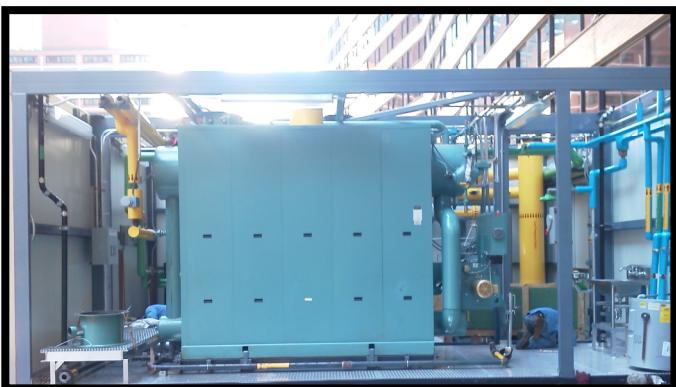
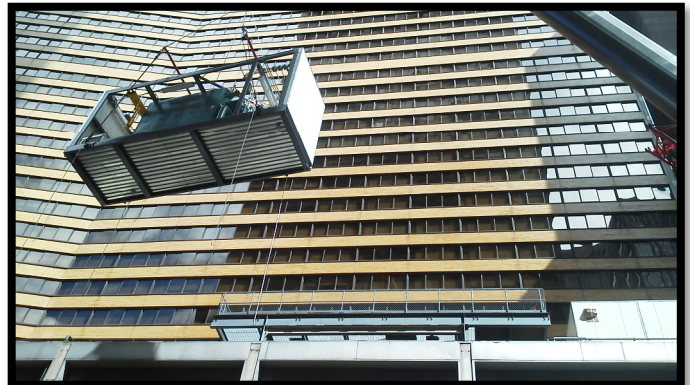
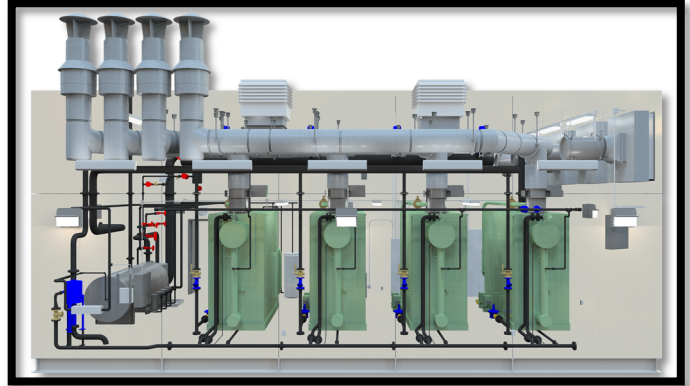
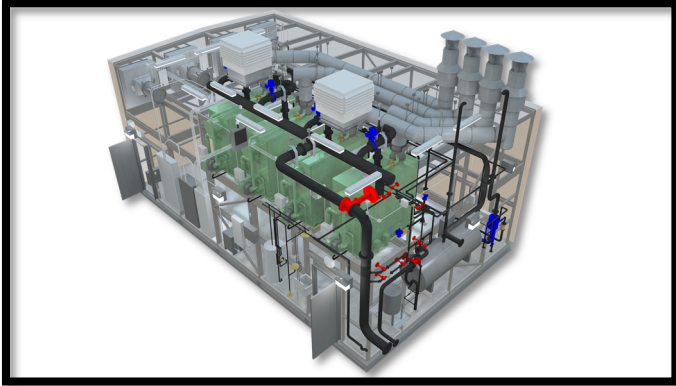


**ENVIRONMENTAL  
AIR  
SYSTEMS, LLC**

623 McWay Drive  
High Point, NC 27263  
336-861-0047

## JOB FACT SHEET

### JOB PHOTOS



**For More Information: [www.easinc.net](http://www.easinc.net)**